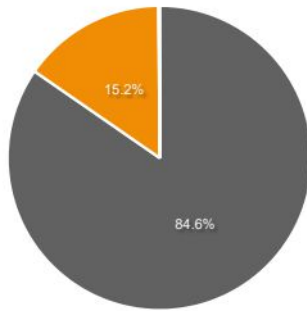


Customer

Customer Name:	Batterie Siems	Operator:	Hellwig/Service-techniker
Battery Type:	04P08S050-ON	Nominal Voltage:	[V]: 25,6
Battery P/N:	530620197	Nominal Capacity:	[Ah]: 200
Battery S/N:	i5306j7	Data Report:	26.09.2024
Manufacturing Data:	50/2019	Ending Date:	Cycle n. 00043
Starting Date:	Cycle n. 00001		

Battery Usage



OFF Time
 Standby Time
 Discharge Time
 Charge Time

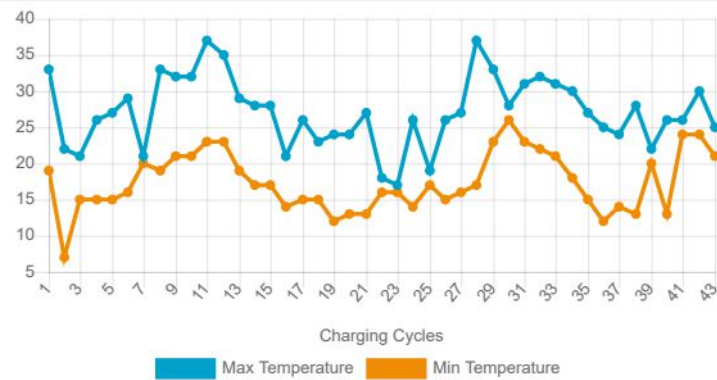
Whole used capacity
1015Ah

Full Charge
30/43

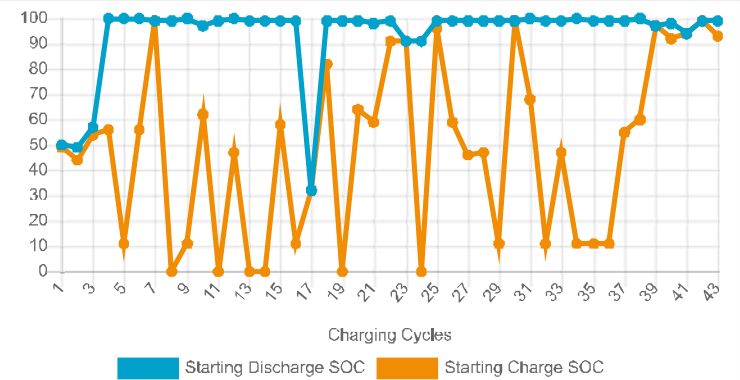
Mean used Capacity
45%

Working hours
44 ore

Temperature trend



State of Charge



Periodical Service

- Battery Equalized
- Check battery connections tightening
- Power battery plug replacement
- Main battery Switch replacement
- Firmware Update
- _____

Description of the Service Performance

Batterie aufgeladen und ueberpueft (26.09.2024). Ladegeraet und Batterie sind in Ordnung. Christoph Hellwig (Service-techniker)

CONNECT

DISCONNECT

CAN SPEED

500 Kbit/s

DEVICE ID

6

BATTERY BRAND

MIDAC

BATTERY MODEL

25,6V 200Ah

BATTERY DATA

BATTERY PARAMETERS

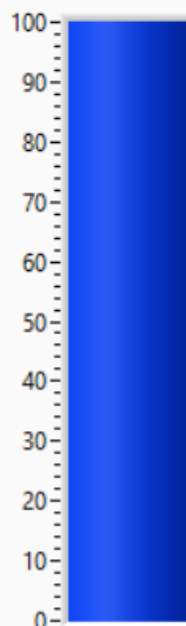
ERROR & EVENT LOGS

TRACE

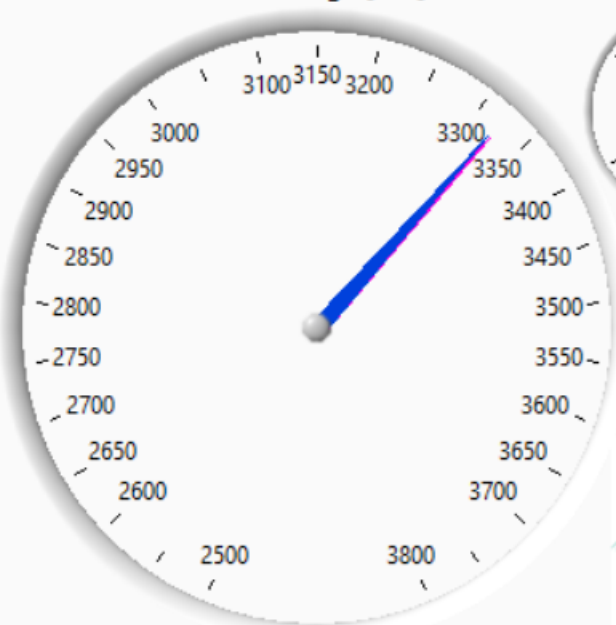
FW DOWNLOAD

DATA

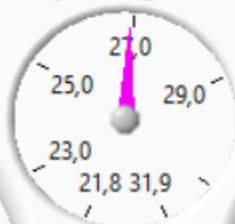
SOH [%]



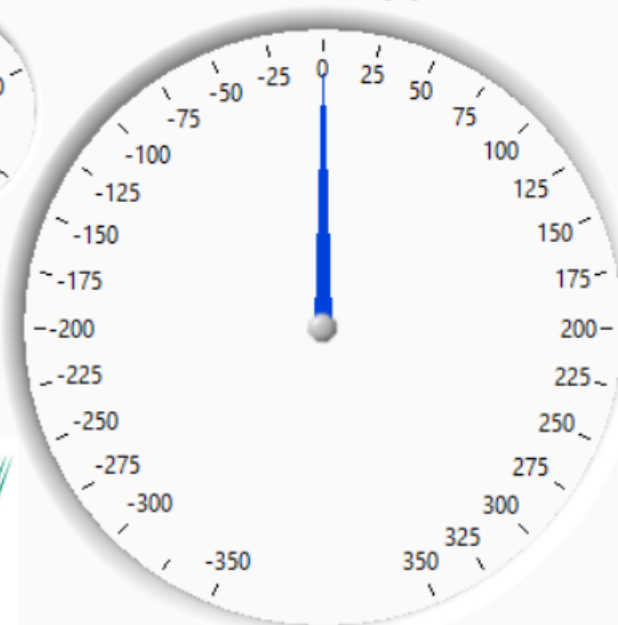
Cell Voltage [mV]



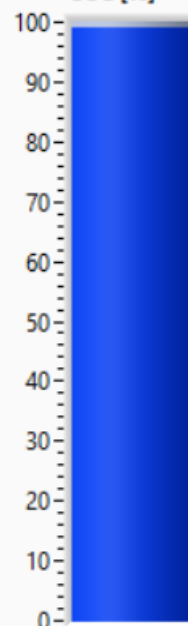
Battery Voltage [V]



Current [A]



SOC [%]



Outputs

- LOW SOC
- BALANCING
- POWERLATCH
- MAIN CONT.
- CHARGE EN.

Cell Voltage [mV]

Highest	Num.
3325	1
Average	
3323	
Lowest	Num.
3321	7

Current [A]

Actual	0
Charge SP	0
Discharge SP	-80

Status

● Connected
Battery Status
NOMINAL
Error Code

Balancing

Ch0	Ch8
Ch1	Ch9
Ch2	Ch10
Ch3	Ch11
Ch4	Ch12
Ch5	Ch13
Ch6	Ch14
Ch7	Ch15

Battery Temperature [°C]

